

# XL Pneumatic Actuators

High on Quality...High on Reliability...High on Service



**HYTORK** 

  
**EMERSON**<sup>™</sup>  
Process Management

# Hytork – High on Quality

- Reduce capital cost
- Reduce installation cost
- Reduce maintenance cost
- Increase plant up-time
- Increase plant and operator safety

*“Hytork has combined quality with reliability and economy in a single package”*

*“Heavy duty cast construction provides maximum protection for harsh service”*

*“Only three moving parts make operation highly dependable”*

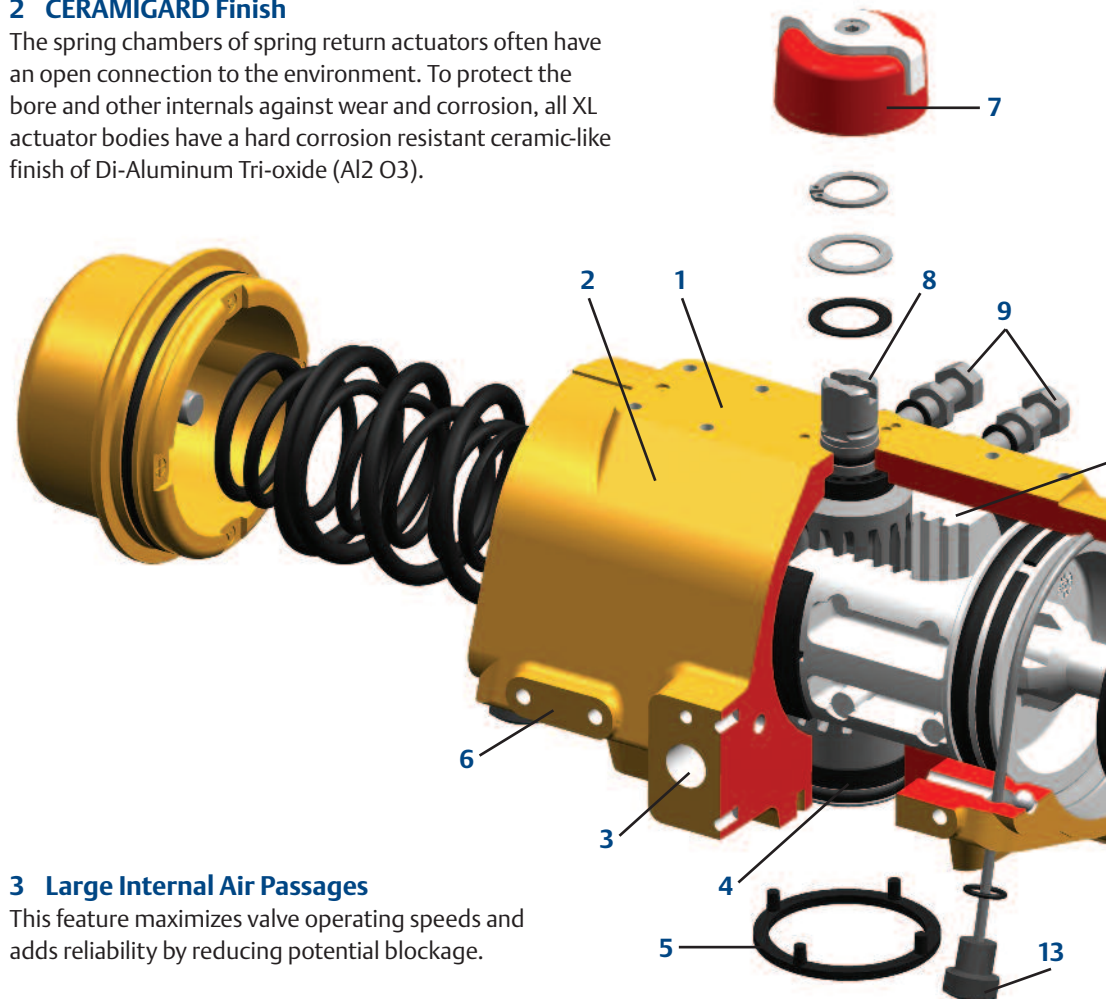
The XL actuator range of actuators is the result of Hytork’s 30-plus years of field-proven experience. The actuators have numerous features that add reliability. Its rugged heavy duty body is made from a high strength LM25 aluminum casting designed to prevent damage from dents, shock or fatigue. The XL is modular in design and is field convertible from double acting to spring return configurations and vice versa.

## 1 NAMUR Mounting

This mounting configuration allows standardization of mounting hardware for a wide range of accessories.

## 2 CERAMIGARD Finish

The spring chambers of spring return actuators often have an open connection to the environment. To protect the bore and other internals against wear and corrosion, all XL actuator bodies have a hard corrosion resistant ceramic-like finish of Di-Aluminum Tri-oxide (Al<sub>2</sub>O<sub>3</sub>).



## 3 Large Internal Air Passages

This feature maximizes valve operating speeds and adds reliability by reducing potential blockage.

## 4 DuraStrip Bearings

All moving parts are protected by permanently lubricated, long lasting DuraStrip bearings. It reduces friction and leads to longer life.

## 5 ISO 5211 Mounting Pad

Hytork XL actuator pinion drives are manufactured to ISO 5211 with a star drive to provide extra flexibility and simplicity for direct mounting to a valve.

## 6 Accessory Mounting Holes

On the smaller sizes there are extra mounting holes near NAMUR solenoid pad to facilitate filter/regulator bracket installation.

# Hytork – High on Reliability

## 7 Visual Position Indicator

The visual position indicator is designed for indication at a glance and can easily be converted from across-line to in-line indication.

## 8 Corrosion Resistant Pinion

Plated with cobalt zinc, the steel pinion is protected from corrosion. Actuator has experienced a salt spray test up to 1,000 hours. The pinion also features a unique stop design.

## 9 Bi-Directional Travel Stops

XL actuators have two travel stops (see page 4).

## 10 Rack and Pinion Design

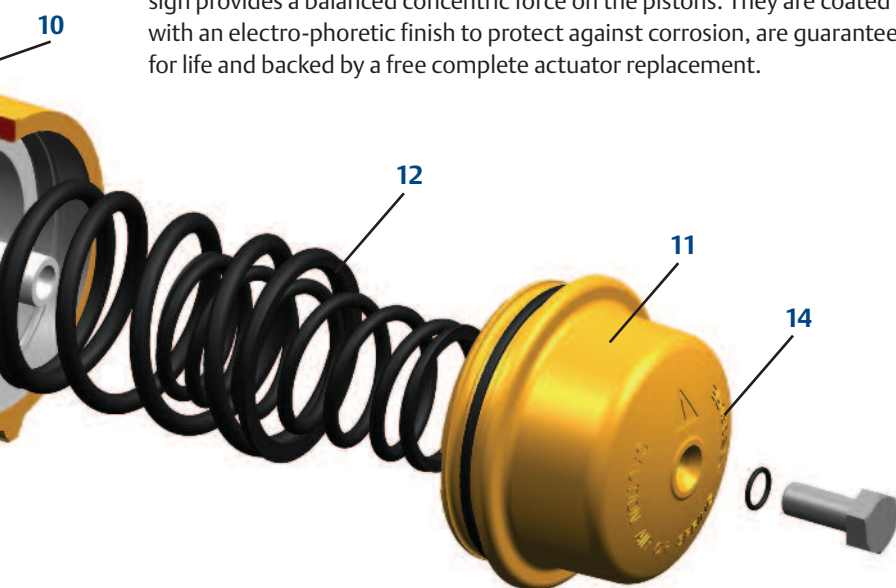
Extra large rack and pinion tooth design promotes full tooth engagement. Assists gear tooth life by reducing stress and having precise gear tooth mesh.

## 11 End Caps

A polyester powder-coated surface treatment as standard on end caps and housing provides extra protection against aggressive environments. (See page 4)

## 12 Spring Package

XL springs are designed and manufactured never to break. The nested design provides a balanced concentric force on the pistons. They are coated with an electro-phoretic finish to protect against corrosion, are guaranteed for life and backed by a free complete actuator replacement.



## 13 SAFEKEY System

The patented SAFEKEY method of end cap assembly to the actuator eliminates dangerous disassembly (see page 4).

## 14 Cast-in identification

The unique cast body and end caps allow cast-in identification model numbers, port identifications and safety instructions and are therefore permanently readable. No lost identification due to weathering or paint.

## Superior design and construction

The XL series is engineered and manufactured to the highest quality and tolerance standards. Site proven DURASTRIP bearings protect all moving parts for guaranteed high cycle life. Unbreakable Springs, with a unique lifetime warranty, assure Fail Safe action when it is needed.

**Increase process safety and plant up time.**

## Easy maintenance

Change a solenoid or positioner, adjust a switch, alter a spring rating or install a new set of bearings and seals (never a spring set) – in just minutes.

**Lower maintenance costs**

## Safety first

Hytork XL actuators comply to the European safety and health requirements as required by the ATEX, PED and Machine Directives.

Rugged, heavy duty body casting, patented SAFEKEY, unbreakable springs and HYTORK'S safety retractor rod system for disassembly of spring return actuators. All these features provide **increased personnel and plant safety.**

## Wide torque range

Hytork's 12 actuator sizes cover a wide torque range (19 to 3232 Nm @ 5.5 Barg: 167 to 28500 in/.lbs @ 80 PSIG). With up to 7 spring sets per actuator size, this allows the correct selection of the actuator size you need, all to **reduce procurement costs.**

## Additional Hytork XL features

All the Hytork XL features provide:

**Reduced capital cost**

**Reduced installation cost**

**Reduced maintenance cost**

**Reduced assembly cost**

**Increased process safety**

**Increased plant up-time**

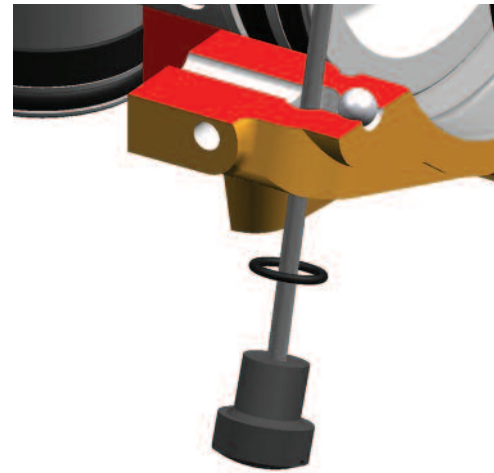
**Increased plant and operator safety**

# Hytork – High on Service

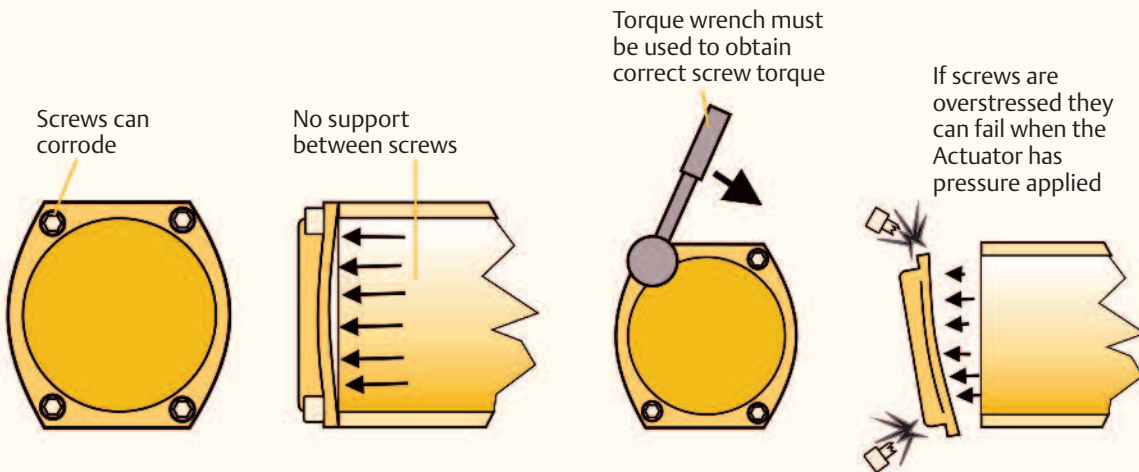
## Safekey System

The Safekey system (patented) uses a flexible stainless steel key in an internal machined keyway. Completely sealed with o-rings to prevent external contamination, the Safekey system eliminates stress concentrations caused by point loading. It is stronger than conventional bolting and is impossible to remove when pressurized or with springs under tension. It is a proven means of eliminating potentially dangerous disassembly.

With the Safekey method, cap screws are not needed to retain the end caps to the actuator body. With other methods, galling can occur and fasteners can break. Competitor models often use Helicoils™ that can turn out or rip out if over torqued. Safekey is yet another Hytork advantage.

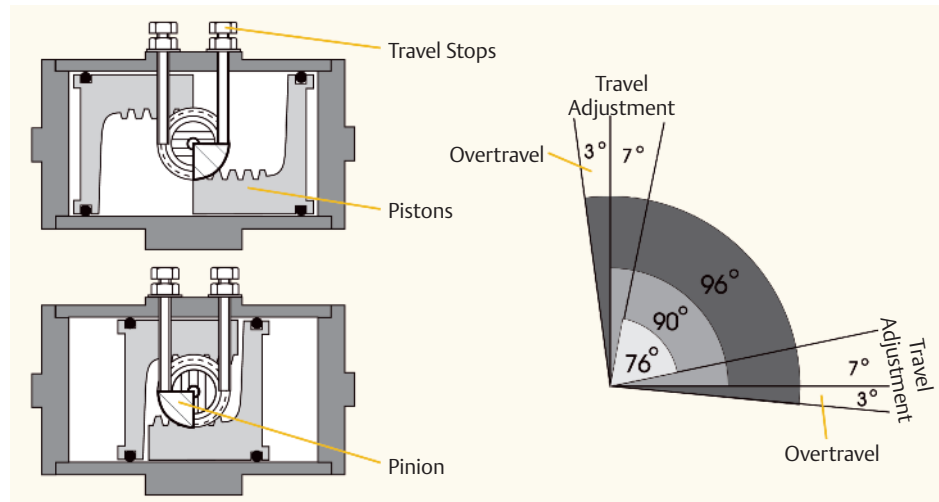


### Safekey System eliminates conventional screws and tierods.



## Bi-Directional Travel Stops

Hytork XL actuators are provided with bi-directional travel stops. This feature provides rotational adjustment on the actuator in both travel directions. The stops provide precise travel control. This is particularly important when used with special duty, high precision valves, such as metal seated or high performance butterfly valves needing exact rotation stopping. Models XL 2586 and XL 4581 have a bottom mounted travel stop plate.



## Value-Added Accessories



### HyVision

The HyVision monitor is a rugged, corrosion resistant enclosure for environments requiring a weatherproof IP66/NEMA 4 ingress protection rating. It is available with up to three conduit entries and switch wiring for up to 16 terminals. Optionally, HyVision can be supplied with ATEX Certificates (intrinsically safe; II2 GD EEx ib) or as HyVision Z2 (non sparking; II3 GD EEx nC)



### SafeVision

This rugged explosion-proof certified enclosure is designed to meet Class I, Division I and ATEX II2 GD requirements. Ingress protection is according to IP66 and NEMA 4x, 7 and 9. The SafeVision enclosure is available with up to four conduit entries and switch wiring for up to 20 terminals. The unique split shaft design allows the cover and indicator to be removed easily in any confined space.

### Valve Position Monitors

Hytork's two monitors, HyVision and SafeVision, can be readily integrated with Hytork XL actuators. Both are corrosion resistant and made for tough duty. Hytork's patented visual indication is the largest, most easily seen indicator available. The monitors have o-ring sealing for protection against ingress of solids or liquids. Multiple conduit entries and internal terminal wiring strips allows solenoid valves, limit switches and other feedback devices to be wired in a single enclosure, a real cost and time saver.

### SafeMount

Hytork's SafeMount (a universal VDI/VDE NAMUR mounting platform) fully encloses the actuators pinion top and coupling, providing maximum protection to plant personnel.

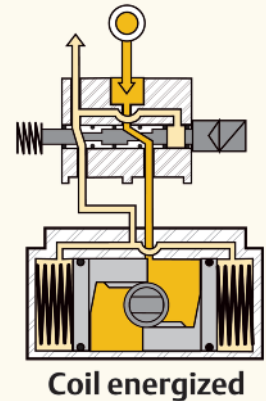


### CATS System on Hytork Solenoid Valves

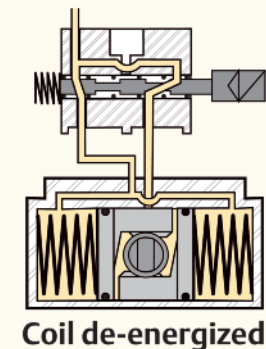
Hytork's solenoid valve with CATS system (Clean Air To Springs) prevents potentially contaminated and corrosive ambient air from entering the spring cylinders of a spring-return unit during the spring stroke. This feature maximizes actuator life and reduces maintenance costs.

#### "CATS" Directional Control Valve fitted to a Spring Return Actuator

Pistons are pushed apart by air pressure forcing air from the spring chambers to exhaust to atmosphere



Exhausting air from between the pistons is forced into the spring chambers preventing the atmospheric air from entering the actuator.





# XL Commando for Corrosion Resistance

The XL Commando range solves aggressive corrosion problems. It works where stainless doesn't. A proprietary heat treatment with CG941 fluoropolymer impregnates the body making it impervious to corrosion. The steel pinion is also fluoropolymer coated. Field service has shown that the Commando actuators outperform other actuators in corrosive environments.

## Contact Us: Emerson Process Management, Valve Automation facilities at your nearest location:

### North & South America

18703 GH Circle  
PO Box 508  
Waller, Texas 77484  
USA  
T +1 281 727 5300  
F +1 281 727 5353

2500 Park Avenue West  
Mansfield, Ohio 44906  
USA  
T +1 419 529 4311  
F +1 419 529 3688

9009 King Palm Drive  
Tampa, Florida 33619  
USA  
T +1 813 630 2255  
F +1 813 630 9449

4112-91A Street  
Edmonton, Alberta T6E5V2  
Canada  
T +1 780 450 3600  
F +1 780 450 1400

Av. Hollingsworth,325  
Iporanga  
Sorocaba, SP 18087-105  
Brazil  
T +55 15 3238 3788  
F +55 15 3228 3300

### Europe

Asveldweg 11  
7556 BT Hengelo(O)  
The Netherlands  
T +31 74 256 1010  
F +31 74 291 0938

Siemensring 112  
D-47877 Willich  
Germany  
T +49 2154 499 660  
F +49 2154 499 6613

25, Rue de Villeneuve  
Silic – BP 40434  
94583 RUNGIS, France  
T +33 1 49 79 73 00  
F +33 1 49 79 73 99

6 Bracken Hill  
South West Industrial Estate  
Peterlee, Co Durham  
SR82LS, United Kingdom  
T +44 191 518 0020  
F +44 191 518 0032

3 Furze Court  
114 Wickham Road  
Fareham, Hampshire  
PO1675H, United Kingdom  
T +44 132 984 8900  
F +44 132 984 8901

Via Montello, 71/73  
20038 Seregno (Milan)  
Italy  
T +39 (0362) 2285 207  
F +39 (0362) 2436 55

### Middle East & Africa

2 Monteer Road, Isando  
Kempton Park, 1600  
South Africa  
T +27 11 974 3336  
F +27 11 974 7005

PO Box 17033  
Jebel Ali Free Zone  
Dubai,  
United Arab Emirates  
T +971 4 811 8100  
F +971 4 886 5465

### Asia Pacific

9 Gul Road  
#01-02 Singapore 629361  
T +65 6501 4600  
F +65 6268 0028

9/F Gateway Building  
No.10 Ya Bao Road  
Chaoyang District  
Beijing, P.R. China  
T +86 10 5821 1188  
F +86 10 5821 1100

No 15 Xing Wang Road  
Wuqing Development Area  
Tianjin 301700  
P.R. China  
T +86 22 8212 3300  
F +86 22 8212 3308

Lot 13111, Mukim Labu,  
Kawasan Perindustrian Nilai  
71807 Nilai, Negeri Sembilan  
Malaysia  
T +60 6 799 2323  
F +60 6 799 9942

471 Mountain Highway  
Bayswater, Victoria 3153  
Australia  
T +61 3 9721 0200  
F +61 3 9720 0588

301, Solitaire Corporate Park  
151, M.V. Road, Andheri(E)  
Mumbai-400093,  
Maharashtra, India  
T +91 22 6694 2711  
F +91 22 2825 3394

NOF Shinagawa Konan Building  
1-2-5, Higashi-shinagawa  
Shinagawa-Ku, Tokyo  
140-0002 Japan  
T +81 3 5769 6873  
F +81 3 5769 6902

© 2008 Emerson Process Management. All rights reserved.

The Emerson logo is a trademark and service mark of Emerson Electric Co. "Brand mark listing" are marks of one of the Emerson Process Management family of companies. All other marks are property of their respective owners.

The contents of this publication are presented for information purposes only, and while every effort has been made to ensure their accuracy, they are not to be construed as warranties or guarantees, express or implied, regarding the products or services described herein or their use or applicability. All sales are governed by our terms and conditions, which are available on request. We reserve the right to modify or improve the designs or specifications of our products at any time without notice.



[www.Hytork.com](http://www.Hytork.com)

