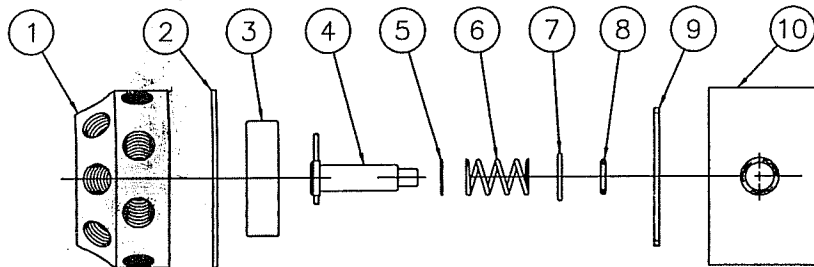


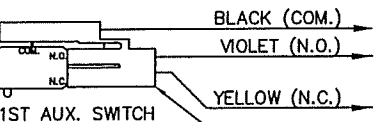
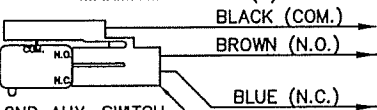
SERIES 58 STAGER ASSEMBLY

PILOT CONTROL ASSEMBLY



OPTIONAL AUX. SWITCHES

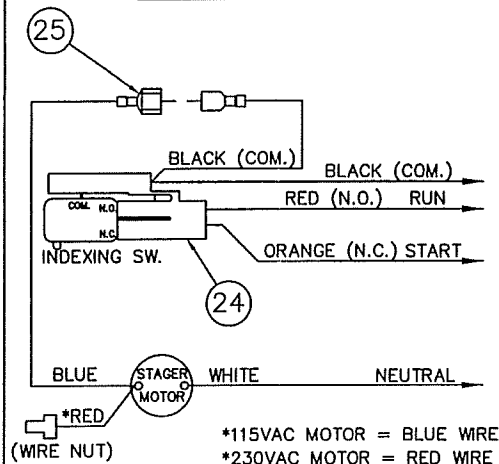
MAXIMUM OF TWO (2)



SWITCH RATINGS

- 11A 1/3HP
- 125, 250, 277 VAC
- 1/2A 125 VDC
- 1/4A 250 VDC
- 4A 125 VAC L

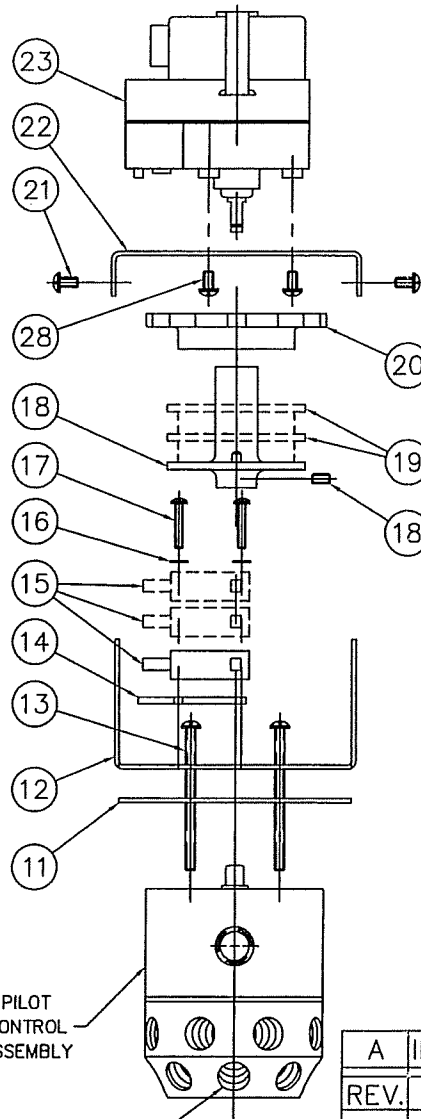
STANDARD WIRING



INTERNAL PARTS KITS

STAGER PROGRAM	INTERNAL PARTS KITS AVAILABLE*	REMARKS
58-00	58-IA-00	
58-01	58-IA-01	FOR INVERTED STAGERS
58-02	58-IA-02	(PRESSURE TO OPEN)
58-03	58-IA-03	PLACE THE LETTER "I"
58-07	58-IA-07	AT THE END OF THE
58-10	58-IA-10	KIT NUMBER
58-TA	58-IA-TA	(EXAMPLE: 58-IA-001)
58-TB	58-IA-TB	
58-SP	58-IA-SP	SPECIFY DWG. NO. WHEN ORDERING THESE PARTS

* INTERNAL PARTS KITS INCLUDE ITEM NOS. 2, 3, 5, 6, 7, 8 & 9 ALONG WITH A SMALL PACKET OF SILICON COMPOUND



PILOT CONTROL ASSEMBLY
PORT NO. 13
(IN-LINE WITH INLET PORT)

NO.	DESCRIPTION	PART NO.	QTY.
1	BACKPLATE	PER PROGRAM	1
2	BACKPLATE GASKET (SEE NOTE 3)	58-KZ	1
3	STEMPLATE (SEE NOTE 3)	PER PROGRAM	1
4	STEMSHAFT	1070439	1
5	WASHER (SEE NOTE 3)	58-AH	1
6	SPRING (SEE NOTE 3)	58-S	1
7	INSERT (SEE NOTE 3)	58-DA	1
8	O-RING (SEE NOTE 3)	ORB-012	1
9	O-RING (SEE NOTE 3)	58-T	1
10	BONNET	58-B	1
11	MOUNTING PLATE GASKET	58-DC	1
12	BOTTOM MOUNTING BRACKET	1070437	1
13	PAN HD. MACH. SCR. (8-32 X 2")	SCS-0087	4
14	INSULATOR	58B019	1
15	SWITCH	58013	1-3
16	LOCKWASHER (NO. 4)	WAS-0015	2
17	PAN HD. MACH. SCREW (4-40 THREAD)	1 SWITCH	SCS-0064
		2 SWITCHES	SCS-0065
		3 SWITCHES	SCS-0151
18	INDEXING CAM (SEE NOTE 1) (CAM INCLUDES 6-32 SET SCREW)	1076243	1
19	AUXILIARY CAM (SEE NOTE 2)	58B017	0-2
20	THUMB WHEEL	58B018	1
21	TAPTITE SCREW (6-32 X 1/4")	1075746	4
22	MOTOR MOUNTING BRACKET	1070436	1
23	MOTOR	115VAC 60HZ	58B000
		230VAC 50/60HZ	58B004
		24VAC 50/60HZ	58B004
		12VAC 50/60HZ	1075779
24	WIRE HARNESS (STANDARD)	58B030	1
25	MALE CONNECTOR	58012	1
26	WIRE HARNESS (1ST AUX. SWITCH)	58015	1
27	WIRE HARNESS (2ND AUX. SWITCH)	58016	1
28	SCREW (M3 X 0.5 X 6)	SCS-0167	3

NOTES:

1. STAGER PROGRAM MUST BE SPECIFIED WHEN ORDERING THIS PART.
2. MUST SPECIFY IN WHICH POSITION(S) SWITCH OUTPUT(S) ARE REQUIRED.
3. SUPPLIED AS A KIT ONLY.

REV.	DESCRIPTION	ECO	DATE	APVD
A	INITIAL RELEASE	1259	03May01	

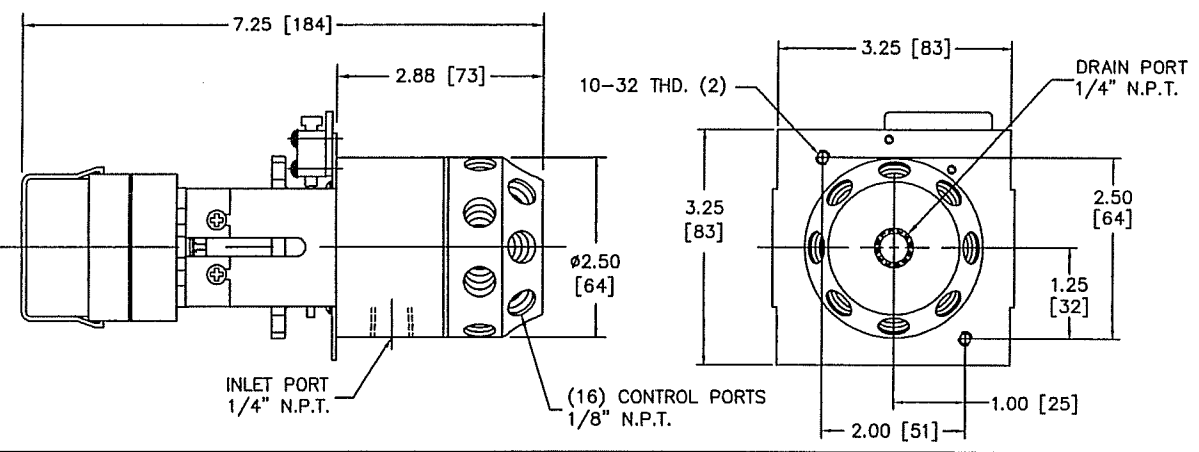


OSMONICS
ROCKFORD OPERATIONS

2412 GRANT AVENUE, ROCKFORD, IL 61103-3991 (815) 954-9421
WWW.OSMONICS.COM

SERIES 58 STAGER ASSEMBLY ASSEMBLY DRAWING

SCALE	DRAWN	DATE	DWG. NO.
3/8	MSM	03May01	1077898

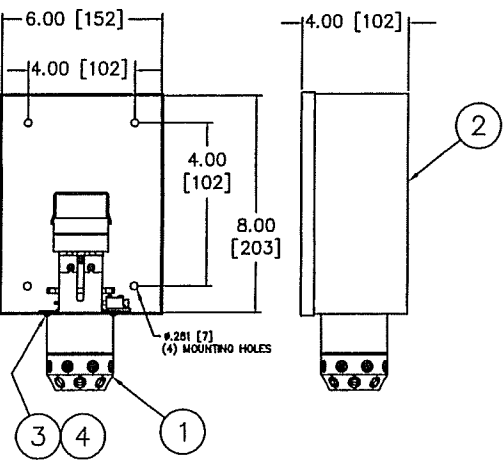


NO.	DESCRIPTION	PART NO.	QTY.
1	STAGER ASSEMBLY	R058-___-___C	1
2	ENCLOSURE	NEMA 1	58-R
		NEMA 4	58-RA
		NEMA 4XFG	ZENC0409
3	PAN HEAD MACHINE SCREW 10-32 x 1/2" LONG	510-BU	2
4	LOCKWASHER (NO. 10)	WAS-0005	2

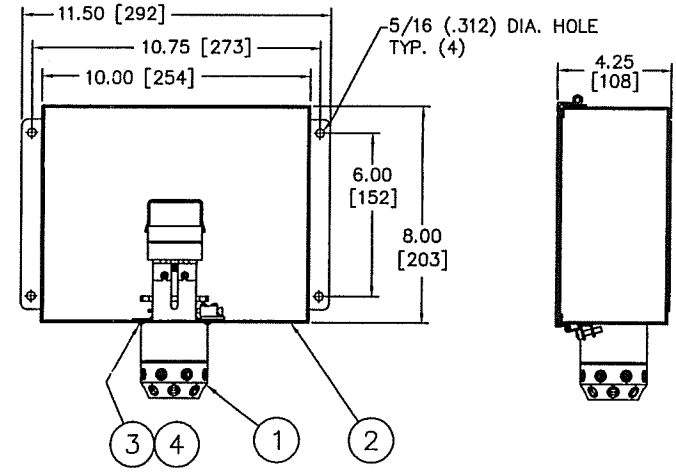
NOTE:
 1. STAGERS CAN BE MANUALLY ADVANCED BY ROTATING THE CAM CLOCKWISE.
 2. PIPING SCHEMATICS AVAILABLE UPON REQUEST.

INCHES [MILLIMETERS]

NEMA 1 ENCLOSURE



NEMA 4 ENCLOSURE



SERIES NO.	DESCRIPTION
58-00	2 COLUMN DEIONIZER
58-01	FILTER (DOUBLE ACTING VALVES)
58-02	2 COLUMN DEIONIZER (CATION OUTLET VALVE)
58-03	3 TANK SEQUENTIAL FILTER
58-04	4 TANK SEQUENTIAL FILTER
58-07	MIXED BED DEIONIZER (SIMULTANEOUS REGEN.)
58-10	MIXED BED DEIONIZER
58-TA	2 TANK ALTERNATOR
58-TB	2 TANK ALTERNATOR WITH TIMED BRINE
58-SP	CUSTOM PROGRAM

A	INITIAL RELEASE	1259	04May01	
REV.	DESCRIPTION	ECO	DATE	APVD
<p>OSMONICS ROCKFORD OPERATIONS 2412 GRANT AVENUE, ROCKFORD, IL 61103-3991 (815) 964-9421 WWW.OSMONICS.COM</p>				
<p>SERIES 58 STAGER PROGRAMS AND MOUNTING DRAWING</p>				
SCALE	DRAWN	DATE	DWG. NO.	
N/A	MSM	04May01	1077898	