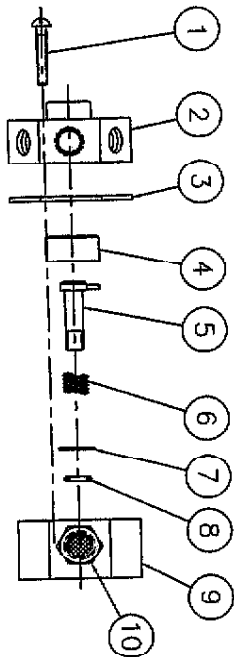
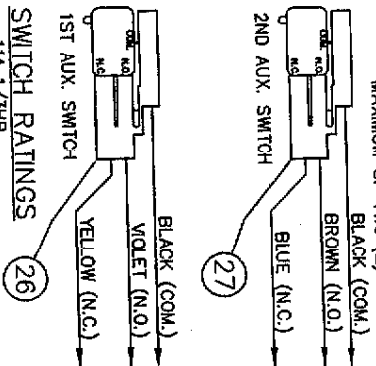


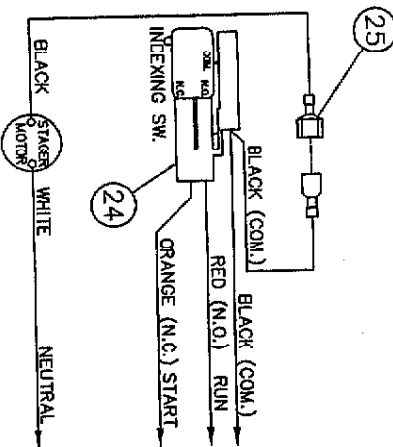
PILOT CONTROL ASSEMBLY



OPTIONAL AUX. SWITCHES



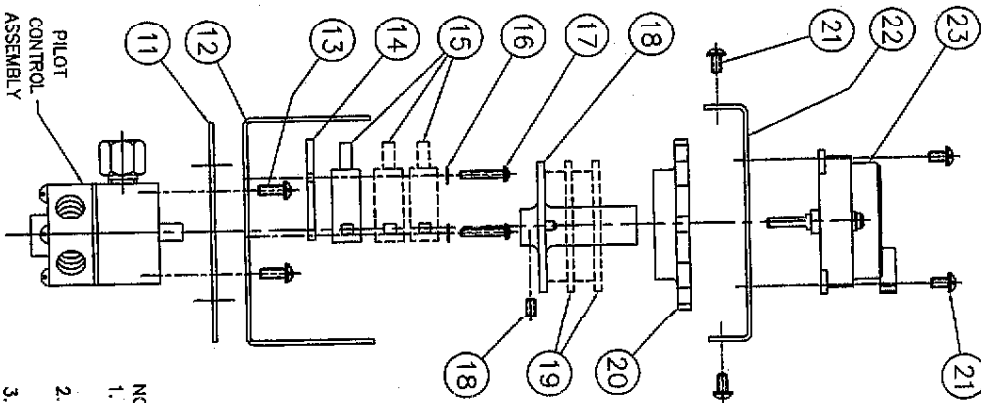
STANDARD WIRING



INTERNAL PARTS KITS

STAGER INTERNAL PARTS PROGRAM KITS AVAILABLE*	REMARKS	
48-00	FOR INVERTED STAGERS (PRESSURE TO OPEN) PLACE THE LETTER "I" AT THE END OF THE KIT NUMBER (EXAMPLE: 48-1A-83I)	
48-01		
48-03		
48-04		
48-11		
48-12		
48-1A		
48-83		
48-84		
48-85		
48-TB	48-1A-TB	SPECIFY DWG. NO. WHEN ORDERING THESE PARTS
48-SP	48-1A-SP	

* INTERNAL PARTS KITS INCLUDE ITEM NOS. 3, 4, 6, 7 & 8 ALONG WITH A SMALL PACKET OF SILICON COMPOUND



NO.	DESCRIPTION	PART NO.	QTY
1	RD. HD. MACH. SCR. (6-32 X 7/8")	SCS-0075	3
2	BACKPLATE	PER PROGRAM	1
3	GASKET (SEE NOTE 3)	48005	1
4	STEMPLATE (SEE NOTE 3)	PER PROGRAM	1
5	STEMSHAFT	1070448	1
6	SPRING (SEE NOTE 3)	1076234	1
7	WASHER (SEE NOTE 3)	41-F	1
8	O-RING (SEE NOTE 3)	ORB-010	1
9	BONNET	48-8	1
10	FILTERED INLET (1/8" N.P.T.)	48-9	1
11	MOUNTING PLATE GASKET	1075737	1
12	BOTTOM MOUNTING BRACKET	1070437	1
13	PAN. HD. MACH. SCR. (6-32 X 3/8")	SCS-0070	4
14	INSULATOR	588019	1
15	SWITCH	58013	1-3
16	LOCKWASHER (NO. 4)	WAS-0015	2
17	PAN. HD. MACH. SCR. (4-40 THREAD)	SCS-0064	1
18	48-00 INDEXING CAM 48-01 INDEXING CAM 48-03 INDEXING CAM 48-TA INDEXING CAM ALL OTHERS (SEE NOTE 1) *CAMs INCLUDE 6-32 SET SCREW	1076245 1076244 1076246 1077532 1076243	1 1 1 1 1
19	AUXILIARY CAM (SEE NOTE 2)	588017	0-2
20	THUMB WHEEL	588018	1
21	TAPTITE SCREW (6-32 X 1/4")	1075746	6
22	MOTOR MOUNTING BRACKET	1070436	1
23	MOTOR (4 WATTS MAX.)	115VAC 60HZ 1075748 230VAC 50/60HZ 1075749 230VAC 50/60HZ 1075750 12VAC 50/60HZ 1075753 115VAC 50HZ 1075755	1
24	WIRE HARNESS (STANDARD)	588C30	1
25	MALE CONNECTOR	58012	1
26	WIRE HARNESS (1ST AUX. SWITCH)	58015	1
27	WIRE HARNESS (2ND AUX. SWITCH)	58016	1

- NOTES:
 1. STAGER PROGRAM MUST BE SPECIFIED WHEN ORDERING THIS PART.
 2. MUST SPECIFY IN WHICH POSITION(S) SWITCH OUTPUT(S) ARE REQUIRED.
 3. SUPPLIED AS A KIT ONLY.

B	CHG INLET 180°	1412	14MAY01
REV.	DESCRIPTION	ECO	DATE
		APVD	

OSMONICS
 ROBOTIC OPERATORS
 2412 GRANT AVENUE, ROOSEVELT, L. 81103-9801 (813) 981-1421
 WWW.OSMONICS.COM

SERIES 48 STAGER ASSEMBLY
 ASSEMBLY DRAWING

SCALE 3/8" DRAWN MSM DATE 11APR01 DWG. NO. 1077882

SERIES 48 STAGER ASSEMBLY