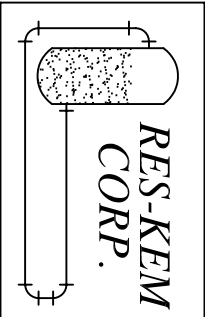
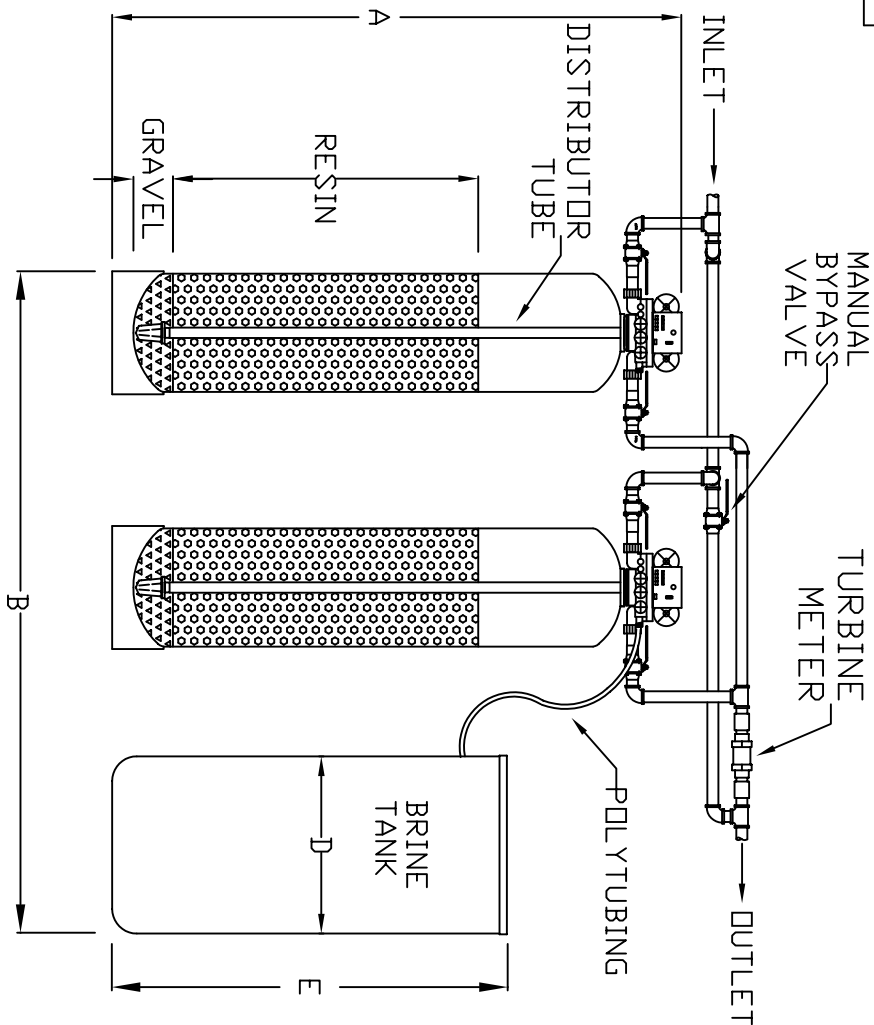
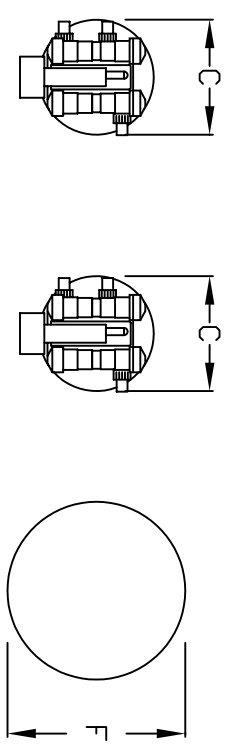


MODEL	DIMENSIONS (INCHES)						INLET/ OUTLET SIZE	BRINE CONN. SIZE*	DRAIN CONN. SIZE	METER SIZE
	A	B	C	D	E	F				
CVFT-90 ALT	77	58	14	18	30	18	1½"OR 2"	½"	1½"	1"
CVFT-120 ALT	77	68	16	24	54	24	1½"OR 2"	½"	1½"	1"
CVFT-150 ALT	77	74	18	24	54	24	1½"OR 2"	½"	1½"	1"
CVFT-210 ALT	79	86	21	24	54	24	1½"OR 2"	½"	1½"	2"
CVFT-300 ALT	86	98	24	30	48	30	1½"OR 2"	½"	1½"	2"
CVFT-450 ALT	94	119	30	39	48	39	1½"OR 2"	½"	1½"	2"
CVFT-600 ALT	96	131	36	39	48	39	1½"OR 2"	½"	1½"	2"

* BRINE CONNECTION IS A COMPRESSION FITTING

NOTES:

- (1) ALL PIPING & VALVES TO BE FURNISHED BY OTHERS.
- (2) AN ELECTRICAL OUTLET SHOULD BE PROVIDED WITHIN 5 FEET OF THE EQUIPMENT
- (3) UNIONS SHOULD BE LOCATED ON THE INLET AND OUTLET CONNECTIONS OF CONTROL VALVE TO FACILITATE SERVICING.
- (4) DO NOT MAKE A DIRECT CONNECTION TO THE DRAIN. PROVIDE AN AIR GAP OF AT LEAST FOUR TIMES THE DIAMETER OF THE DRAIN PIPE TO CONFORM TO THE SANITATION CODES AND TO PERMIT THE OBSERVATION OF DRAIN FLOW.
- (5) ALLOW 24 INCHES ABOVE THE SOFTENER FOR FILLING.



PO BOX 1059
 MEDIA, PA 19063
 TELEPHONE: 610.358.0717
 FAX: 610.358.4642
 E-MAIL: sales@reskem.com
 INTERNET: http://www.reskem.com

This document is the property of RES-KEM CORP. and thereby subject to confidential use. It shall not be reproduced, furnished to others or used for other than its intended purpose without the express written consent of RES-KEM CORP.

CVFT-ALT SERIES
 ALTERNATING
 WATER SOFTENER