



RESIN ANALYSIS REPORT

CLIENT: RES-KEM CORP
LOCATION: PO BOX 1059
MEDIA, PA 19063
PHONE: 610-358-0717

DATE: JULY 31, 2008

REPORT NUMBER: 0529-1

MARKINGS: TRAIN B

RESIN TYPE: STRONG BASE ANION

ANALYST: MB

APPROVED: WF

COMPARABLE RESIN

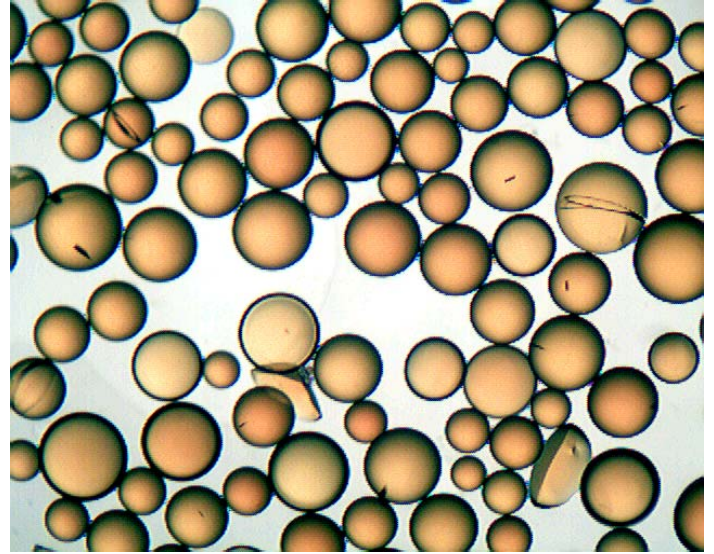
% MOISTURE HOLDING CAPACITY

TOTAL CAPACITY
MEQ/G
MEQ/ML
% STRONG BASE

BEAD INTEGRITY, %
(WHOLE-CRACKED-BROKEN-MISS SHAPE)

EXTRACTIBLE ORGANICS,
Mg C/g resin

REASON FOR ANALYSIS: ROUTINE MAINTENANCE
CHECK-VERIFY LIFESPAN



RESULTS	COMPARISON A-300
43.0	40-45
3.16	
1.27	1.4
60.7	
94-2-4	
6.72	