



RESIN ANALYSIS REPORT

**CLIENT: RES-KEM CORP
LOCATION: PO BOX 1059
MEDIA, PA 19063
PHONE: 610-358-0717**

DATE: JULY 31, 2008

REPORT NUMBER: 0529-1

MARKINGS: TRAIN A

RESIN TYPE: STRONG BASE ANION

ANALYST: MB

APPROVED: WF

COMPARABLE RESIN

% MOISTURE HOLDING CAPACITY

TOTAL CAPACITY

MEQ/G

MEQ/ML

% STRONG BASE

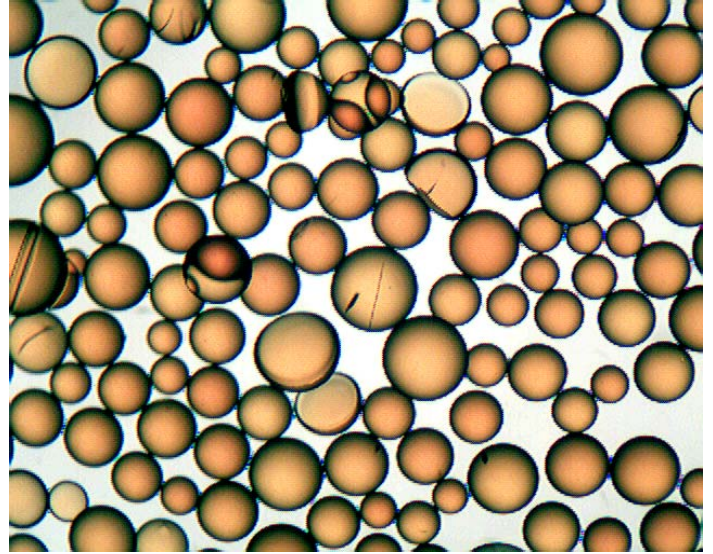
BEAD INTEGRITY, %

(WHOLE-CRACKED-BROKEN-MISS SHAPE)

EXTRACTIBLE ORGANICS, Mg C/g resin

REASON FOR ANALYSIS: ROUTINE MAINTENCE

CHECK-VERIFY LIFESPAN



RESULTS	COMPARISON A-300
43.5	40-45
3.22	
1.28	1.4
58.9	
94-3-3	
7.4	